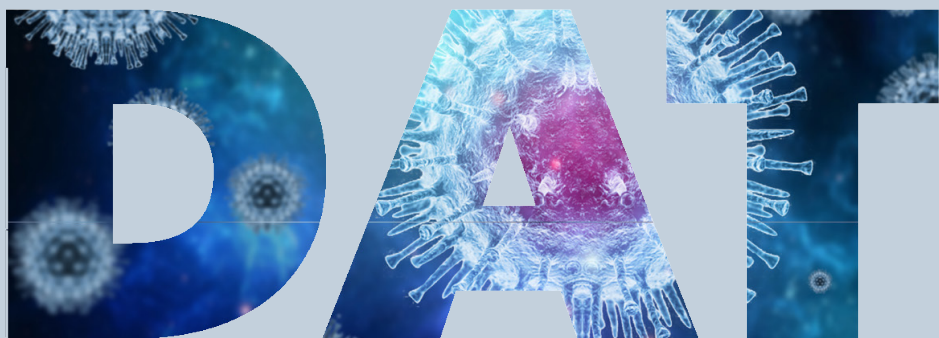
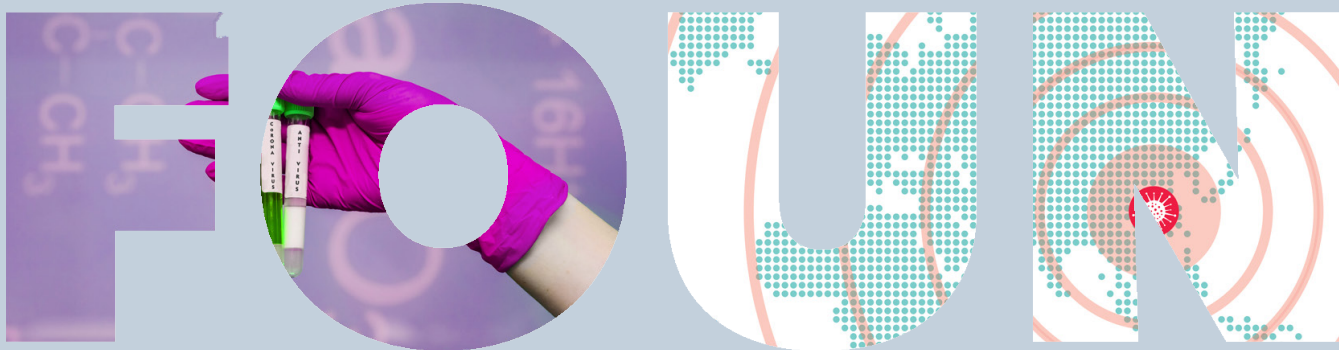


# 2023 ANNUAL REPORT



ACE FOUNDATION

# TABLE OF CONTENTS

- 2** MESSAGE FROM PRESIDENT
- 3** OUR MISSION
- 4** OUR VALUES
- 5** TARGETED AND EXPANDED OUTREACH
- 6** ENDOWED LECTURE
- 7** FOCUS FOR 2024
- 8** DONORS
- 9** BOARD OF DIRECTORS
- 10** FINANCIAL REPORT



# MICHELE R. FORMANPH.D

## President, ACE Foundation

In 2023, epidemiologists seek to investigate new approaches to monitor and surveill health and disease; combat folk myths and disinformation that form baseless claims about prevention; and develop new technologies to synthesize genetic, environmental and social-cultural determinants to help individuals cope and adapt to a changing environment and health issues across the life course. We tirelessly mentor the next generations. We keep our ears to the ground to accelerate the field. We work with others as we are the original team science. As a global community, our field work addresses health crises in countries with diverse socioeconomic and cultural norms; and we strive to form strong, lasting ties with country and regional units to ameliorate devastating famine and disease in a culturally appropriate context. The good news is the world is hungry for answers!



At the American College of Epidemiology Foundation, our strategic planning is dynamic. We work with the ACE to meet challenges. Last year's annual meeting had a stellar Endowed Lecture supported by the Foundation that was presented by Dr. Michael Osterholm. He is a world renown scientist at the forefront of the Covid epidemic. In addition to the Endowed Lecture, the Foundation funds the Minority Affairs Committee workshop and treats everyone to a reception when each year's newly elected Fellows are introduced. We work with the newly established ACE Scholars Program and support the scholar's attendance at the annual meeting.

We offer targeted grants to: improve public trust and awareness of epidemiology; mentor epidemiologists; enhance communication across the ACE; and accelerate retention and recruitment of ACE membership. We know there are committed, passionate epidemiologists who just do not know of the ACE.

Epidemiology is essential to the lifeblood of our health and society. The Foundation has as part of its mission to develop a scientifically aware population about public health by supporting forums to educate all citizenry.

The Foundation is managed by its own board of directors. It exists to enhance and serve the field of epidemiology, and with this vision, improve the health of the global public. We wish to further synergize a joint venture with ACE membership.

Importantly, the elements of our mission, vision, and strategic plan require funds. On behalf of the Board of Directors of the ACE Foundation, I thank each of you for your support, and passion for the field. You inspire us.

Won't you join me in supporting the Foundation that helps epidemiology meet future challenges?





# OUR MISSION IS:

Guided by the principles of epidemiology and its practitioners' ability to improve the human condition. In partnership with the American College of Epidemiology's leadership, the Foundation will be the premier philanthropic organization to expand resources to promote epidemiology, by offering mentorship, education and resources for the American College of Epidemiology's members and the public worldwide.

# OUR VISION IS FOR:

The Epidemiology Foundation to support the field of epidemiology overall and through educational and career development activities for future and current epidemiologists at all career stages worldwide.



# TARGETED & EXPANDED

## Outreach

We had a banner year with the largest collection of donations from YOU!

## Team Work!

The Board of Directors continued their ongoing growth and development, we participated in multiple strategy sessions to refine how the Foundation as an organization can continue to grow and support the American College of Epidemiology and further the field as a whole.

Our continual focus is on the still point of the compass to bring in funds for the American College of Epidemiology.

# ENDOWED LECTURE AT THE ANNUAL MEETING



Dr. Michael Osterholm

## of the American College of Epidemiology

Michael T. Osterholm, PhD, MPH is Regents Professor, McKnight Presidential Endowed Chair in Public Health, the Director of the Center for Infectious Disease Research and Policy (CIDRAP), Distinguished Teaching Professor in the Division of Environmental Health Sciences, School of Public Health, a professor in the Technological Leadership Institute, College of Science and Engineering, and an adjunct professor in the Medical School at the University of Minnesota.

Dr. Michael Osterholm gave a Fireside Chat for the Endowed Lecture that focused on lessons learned from the Covid pandemic. In point of fact, he underscored how we have not taken account of all of what we did well and did not do well. This matter has implications for the future.

One lesson we did learn was the lack of humility in communications with the public. Communications across the Covid pandemic did not inform what we know and what we do not know about Covid, including the vaccines that initially had short-lived protection. In the future we will need to do a better job of communicating the certainty and uncertainty of the protection in new vaccines including the length of protection from the variants.

Another issue focuses on the opportunity to and communication style to regain public trust. During the Covid pandemic, self-ordained experts in modeling the disease were off base. Yet the media that covered these models were unwilling to challenge these experts until the models were clearly discordant with the data on infectious disease rates and mortality rates. Of note, the Covid pandemic has not had the rates of mortality reported for SARS or MERS; indeed Dr. Osterholm describes the Covid pandemic as an 'average' pandemic.

A lesson learned but not perhaps well documented so far is whether government mandated lock downs were/are effective. Dr. Osterholm mentioned that in Minnesota so many individuals were considered essential personnel during a government mandated lock down that there was no such thing as a lock down. Temporary lock downs might be effectively put in place to slow down the rates of increase in Covid incidence and reduce mortality. Along the same lines, mask mandates have been studied with data revealing few individuals in hospital settings that wear N95 respirators; and with the use of other masks, therefore the quality of masking was useless.

Finally the discussion turned to crisis communication education for any one of us in front of the public or the media. He recommended the following in communication education: understanding the factors influencing the desire to vaccinate or not; the need to convey what we do and do not know about each vaccine; whether vaccines should be mandatory and for whom, when and how to assure high vaccination rates.

We look forward to Dr. Osterholm's new book on the topic of lesson learned!

**5th Annual**  
Endowed Lecture

**Expanded**  
the Minority Affairs  
Committee Workshop



# FOCUS FOR 2024

**In 2024, the leadership of the Foundation is focused on:**

- A Donor Bill of Rights
- A Guideline for External Sources of Donations including: corporate, non-governmental organizations, and individual non-members of the ACE. We aim to monitor all organizations in a dynamic environment.
- Training in Philanthropy and Development



# DONORS

**Melinda Aldrich, PhD, MPH**

**Russell Kirby, PhD**

**Jonine L. Bernstein, PhD**

**Pauline Mendola, PhD**

**Christine Branche, PhD**

**Charles Nzelu, PhD**

**Linda Brown**

**Denise Oleske, PhD**

**Brian Dixon, PhD**

**Michael Peng, PhD, MPH**

**Harold Feldman, MD, MSCE**

**Victor J. Schoenbach, PhD**

**Michele Forman, PhD**

**Paul A. Schulte, PhD**

**Salim Habayeb, MD, MPH**

**Julie Smith-Gagen, PhD, MPH**

**John Holmes, PhD**

**James Turner**

**Danyal Hussain**

**James C. Torner, PhD**

**CHMI Group**

**Edward Trapido, ScD**

**Steven J. Jacobsen, MD, PhD**

# BOARD OF DIRECTORS 2023-24



**President**  
**Michele R. Forman PhD**

Fellow of the American College of Epidemiology  
Fellow of the American Society of Nutrition Retired  
Department, Chair/Distinguished Professor, Purdue



**Secretary/  
Treasurer**  
**Sunday Clark**

ScD, MPH,  
Department  
of Emergency  
Medicine,  
New York, NY



**Director**  
**Stephen Andrew  
Deppen**

MA, MS, PhD,  
Vanderbilt University



**Director**  
**Morgan J. Grant**

MS, MBA, CHES, CPH  
Texas A&M University  
School of Public Health



**Director**  
**William J. Lee**

JD, MS  
Kershaw Talley Barlow



**Director**  
**Russell S. Kirby**

PhD, MS, FACE  
College of Public Health,  
University of South Florida  
Tampa, Florida



**Director**  
**Edward J. Trapido**

Sc.D, FACE, LSUHSC  
School of Public Health,  
LSU Health Sciences  
Center, New Orleans,  
Louisiana



**Director**  
**Kelly Sullivan**

PhD, MPH, FACE  
Georgia Southern  
University



**Director**  
**Jewel L. Wright**

PhD,  
Department of Health  
and Human Services



# FINANCIAL REPORT 2023

## Here is our year-end financial summary:

12/31/23 Account Balance: \$41,745.41

---

2023 Operational Expenses: \$3,432.79

2023 Total Donations: \$9,065.00

2023 Average Gift: \$394.13

**If you have any questions, please contact  
Dr. Michele Forman, Foundation President.**

# ACE FOUNDATION 2023 ANNUAL REPORT

2023 ANNUAL REPORT

